

# Terminal HEPA modules



## Applications

Filterfit HEPA modules are designed for use in cleanroom or critical environment applications that require the installation of HEPA filters at the point of entry to room. This requirement is set out in Australian Standard AS1386. Cleanrooms and clean workstations, and the Code of Good Manufacturing Practice for Therapeutic Goods - Medicinal Products published by the Department of Community Services and Health.

Typical cleanroom applications include:

- Hospital operating theatres
- Electronics manufacture
- Food and pharmaceutical manufacture
- Processing, manufacturing and packaging of high precision goods

## Description

Filterfit terminal HEPA modules are fully-manufactured in Australia and designed for installation in ceilings of new cleanroom construction, or for upgrading existing rooms. Modules are suitable for use in ceilings of plasterboard and sandwich panel construction. Filterfit terminal modules supplied comprise the plenum, HEPA filter and fascia. Modules can be supplied with a variety of options including inlet and outlet sizes and positions (top or side entry), fascia finish and remote plug-in fan box.

## Construction

The housing is constructed of 1.2mm zincaneal with powder-coated white gloss finish. Each module incorporates pre-drilled hanging brackets at top to aid in suspension

Standard fascia guards are supplied with gloss white finish. Stainless steel and aluminium finishes are available on request. Fascia guards are secured with quick release fasteners for ease of access to HEPA filter.

## Fan

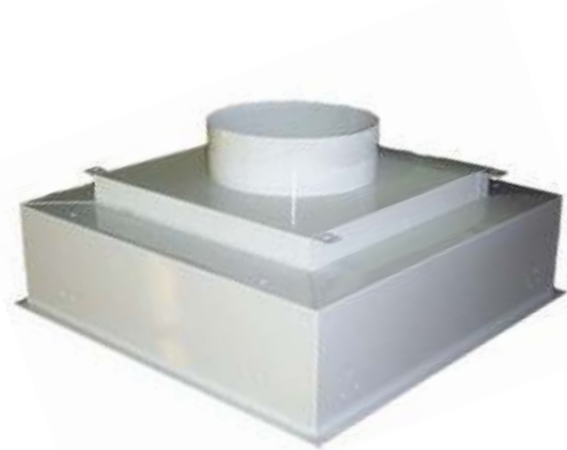
A remote plug in fan module with variable speed control can be supplied to assist the delivery of air from the central air supply system or transfer air from designated areas. Remote fan use provides quieter operation and easier servicing.

## Power

Provided by a single phase, 240v, 10 amp, 3 pin plug.

## HEPA filters

HEPA filters are manufactured to the most exacting standards for critical applications. Each filter is individually certified to achieve an arrestance efficiency of not less than 99.99%.



# Terminal HEPA modules

## Installation and maintenance

Filterfit can provide the initial on-site installation of the filter module and HEPA and provide NATA certification of unit ensuring conformity to Australian standards.

## Testing

HEPA filters require testing at least annually or after HEPA filter replacement.



## Specifications:

Part no.	Model	Clean capacity at 0.6 m/sec	Nom. dimensions (W x H x D)	Spigot dia. (mm)	Type
6-3001	FF22TE	245 l/s	635 x 635 x 300	300 / optional	top entry supply
6-3003	FF22SE	245 l/s	635 x 635 x 570	300 / optional	side entry supply
6-3005	FF32TE	360 l/s	635 x 960 x 300	300 / optional	top entry supply
6-3006	FF32SE	360 l/s	635 x 960 x 570	300 / optional	side entry supply
6-3002	FF42TE	475 l/s	635 x 1295 x 300	300 / optional	top entry supply
6-3004	FF42SE	475 l/s	635 x 1295 x 570	300 / optional	side entry supply

Filters sold as separate item